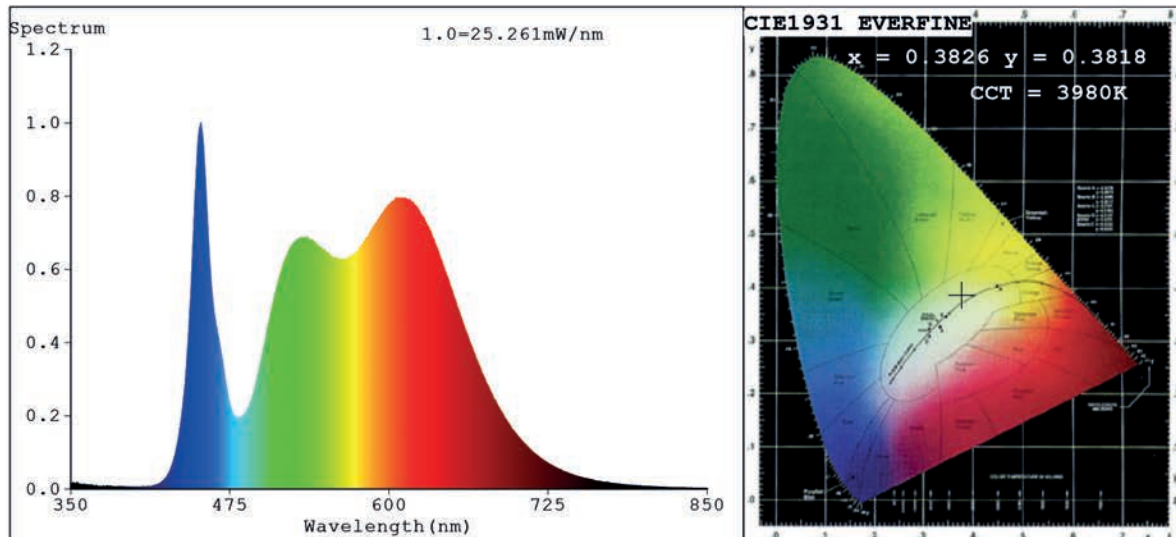


Spectrum Test Report



Color Parameters:

Chromaticity Coordinate: $x=0.3826$ $y=0.3818$ $u'=0.2245$ $v'=0.5041$
 CCT=3980K(Duv=0.0017) Dominant WL:Ld =578.2nm Purity=29.4%
 Ratio:R=19.9% G=76.8% B=3.3%;;Peak WL:Lp=452.2nm FWHM=18.2nm
 Render Index:Ra=91.2 CRI=86.3 TM30:Rf=89 Rg=100
 R1 =93 R2 =93 R3 =91 R4 =94 R5 =91 R6 =90 R7 =94
 R8 =84 R9 =54 R10=81 R11=93 R12=63 R13=93 R14=94 R15=89

Photo Parameters:

Flux = 1181 lm Eff. : 108.68 lm/W Fe = 3.772 W

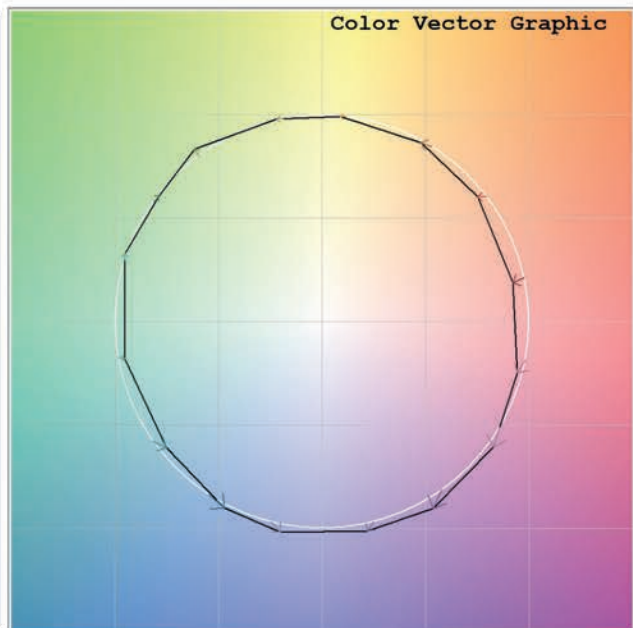
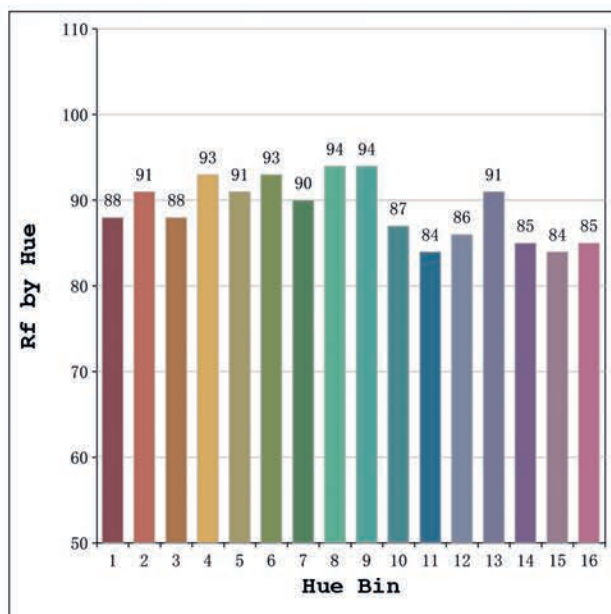
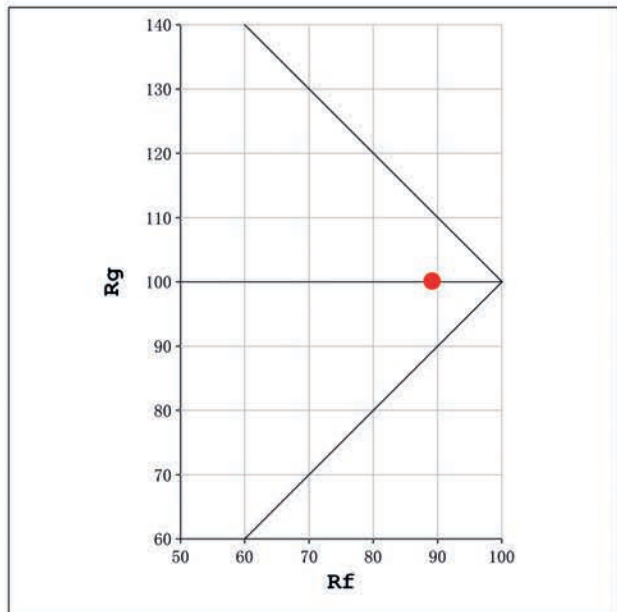
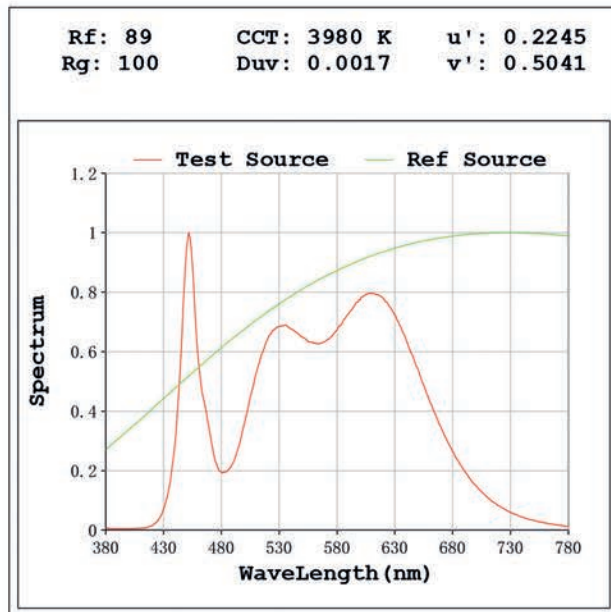
Electrical parameters:

V = 23.998 V I = 0.4528 A P = 10.87 W PF = 1.000

Status: Integral T = 1279 ms Ip = 50295 (77%)

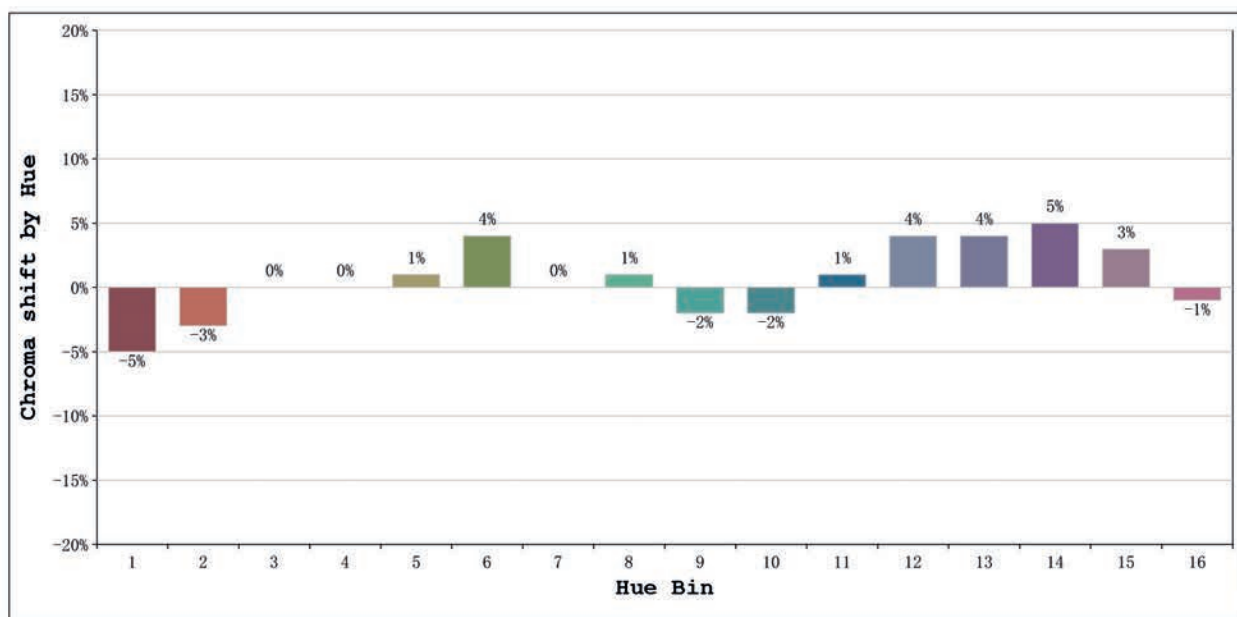
Model:Ecoled COB Roll to roll
 Tester:Sergio Carneros
 Temperature:20Deg
 Manufacturer:Luz Negra

Number: 31.241
 Date:2025-06-17 08:22:52
 Humidity:50%
 Remarks:100cm de tira flexible



Model:Ecoled COB Roll to roll
 Tester:Sergio Carneros
 Temperature:20Deg
 Manufacturer:Luz Negra

Number: 31.241
 Date:2025-06-17 08:22:52
 Humidity:50%
 Remarks:100cm de tira flexible



| | | | Graphic shift(%) | |
|---------|-----------------|----|------------------|-----|
| Hue Bin | Hue Angle | Rf | Chroma | Hue |
| 1 | 0.0° - 22.5° | 88 | -5 | 0 |
| 2 | 22.5° - 45.0° | 91 | -3 | 2 |
| 3 | 45.0° - 67.5° | 88 | 0 | 5 |
| 4 | 67.5° - 90.0° | 93 | 0 | 3 |
| 5 | 90.0° - 112.5° | 91 | 1 | 3 |
| 6 | 112.5° - 135.0° | 93 | 4 | 0 |
| 7 | 135.0° - 157.5° | 90 | 0 | -2 |
| 8 | 157.5° - 180.0° | 94 | 1 | -2 |
| 9 | 180.0° - 202.5° | 94 | -2 | 1 |
| 10 | 202.5° - 225.0° | 87 | -2 | 6 |
| 11 | 225.0° - 247.5° | 84 | 1 | 10 |
| 12 | 247.5° - 270.0° | 86 | 4 | 6 |
| 13 | 270.0° - 292.5° | 91 | 4 | -3 |
| 14 | 292.5° - 315.0° | 85 | 5 | -7 |
| 15 | 315.0° - 337.5° | 84 | 3 | -8 |
| 16 | 337.5° - 360.0° | 85 | -1 | -6 |

Model:Ecoled COB Roll to roll
Tester:Sergio Carneros
Temperature:20Deg
Manufacturer:Luz Negra

Number: 31.241
Date:2025-06-17 08:22:52
Humidity:50%
Remarks:100cm de tira flexible